

# The Raven

The mission of Juneau Audubon Society is to conserve the natural ecosystems of Southeast Alaska, focusing on birds, other wildlife and their habitats for the benefit and enjoyment of current and future generations.



Volume 29, Number 9

Juneau Audubon Society

May 2003

## May ALMANAC

**Arctic Terns arrive from  
Antarctica**

**One to two eaglets hatch  
late May/early June**

**Sandhill Cranes pass by  
Gustavus, Wrangell,  
Petersburg en route to  
western & northern  
Alaska**

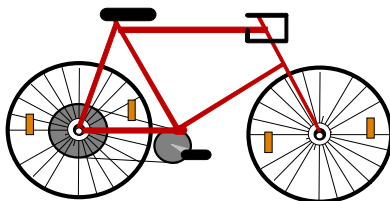
**Moose calves are born  
mid-May to early June**



**Wolf pups  
are born  
May/early  
June**

**May 10 is International  
Migratory Bird Day**

**Mountain goat kids are  
born late May/early June**



### Monthly Meeting

Thursday, May 8, 7:30 p.m.  
Dzantik'i Heeni Middle School Library

### Bicycle Touring in Chile and Argentina: Top to Bottom Mike Blackwell

For the past 15 years, Mike Blackwell, Jim Johnson, and some others have been on a discontinuous, segmented, bicycle tour of the world. In this slide show, Mike and Jim report on their amusing 5000-km excursion from Arica, Chile, on the Peruvian border, to Ushuaia de Argentina, at the end of the road in Tierra del Fuego.

## Celebrate International Migratory Bird Day 2003

International Migratory Bird Day (IMBD), held the second Saturday in May, celebrates an important and spectacular event in the life of a migratory bird—its journey between its summer and winter homes.

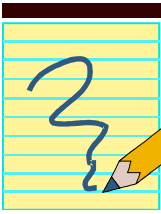
Here are two great ways to celebrate in Juneau.

On **Saturday, May 10**, take a bird walk on the Mendenhall Wetlands with Bob Armstrong, author of numerous bird and nature guides for Alaska and an accomplished photographer. For details, see our bird walk schedule on page 4.

On **Thursday, May 15**, attend a program at the Mendenhall Glacier Visitor Center Theater from 6:30 p.m. to 9 p.m. Gwen Baluss of the U.S. Forest Service will give a presentation about banding neotropical migrants in Alaska and Mexico. There will be a concurrent hour-long program for children in another room at the visitor center beginning at 6:30 p.m. with Kristen Romanoff from Alaska Department of Fish & Game. Further information is available from Gwen or from Michelle Kissling with U.S. Fish & Wildlife Service.

Like any day of recognition, IMBD exists to focus attention on a valuable resource—the nearly 350 species of migratory birds that travel between nesting habitats in North America and non-breeding grounds in South and Central America, Mexico, the Caribbean, and the southern U.S. Migratory birds are some of the most beautiful, observable, and remarkable wildlife that share our world. In Juneau, this includes all of our warblers, many ducks, flycatchers, and our hummingbirds.

*(continued on page 2)*



## A message from the board

**Brenda Wright, president**

The Juneau Audubon Society board met on April 15, 2003. We have several projects that are in progress, including a donation of some fabulous mountain goat photographs to be hung in the visitor's center and near the cruise ship information kiosk, and updates on the golf course issues (courtesy of Matt Kirchhoff and Sue Schrader). We also discussed our use of chapter funds for our Raven newsletter and one of our major fundraisers, the Berners Bay cruises. If you were not on the April cruise, please consider taking the May 3, 2003 cruise! (**Ed. note:** the morning cruise is already sold out, but space may still be available on the afternoon sailing.)

The board decided to continue supporting the bi-monthly contribution to the Southeast Wild column in the Juneau Empire. Please let us know if you would like to contribute an article, or know someone who has a birding or natural history story to share.

We are hoping to promote a Bird-a-thon to raise interest in fall migrations in the Juneau area. Fall is a time of sometimes unreasonable weather, but also a time of interesting birding in our area. Let's start a new tradition of bird walks and awareness as our daylight length shortens and our migrants pass through town with the last of the cruise ship passengers.

We are always on the lookout for interested volunteers to support our committees and board. Please contact any member of the board with suggestions or offers of time.



Your berry-picking hands. Homemade jams and jellies are the highlight of Juneau Audubon's booth at the annual Juneau Public Market on Thanksgiving weekend. And they are a major fund-raiser for our chapter. As you are picking berries this summer, please consider picking a bucket or two to donate to this cause. You can contact Mary Lou King at [kingfarm@ptialaska.net](mailto:kingfarm@ptialaska.net) to contribute. Many hands will help insure this holiday tradition continues.

### **International Migratory Bird Day 2003**

*(continued from page 1)*

Our migratory birds need habitat available in both their winter and summer habitats. The International Migratory Bird Day hopes to emphasize our appreciation of our migratory species and lead to increased protection for their habitat needs.

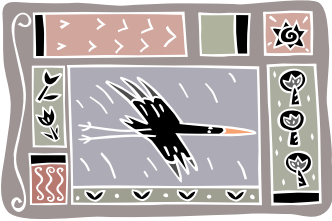
Here are other suggestions for enjoying our migratory birds:

- Take notice of the birds around you
- Point out these birds to someone else
- Create or improve habitat at your home
- Keep your cat indoors—it helps both cat and birds!
- Donate to a wildlife preservation fund or group
- Get involved in community land-use planning
- Teach young people about migratory birds and IMBD

For further information check the official web site at <http://birds.fws.gov/imbd/>

### **September Raven Deadline**

The next Raven will be published in September. Please submit articles by August 21 to [raven@juneau-audubon-society.org](mailto:raven@juneau-audubon-society.org)



## My favorite bird

**Ruby-crowned Kinglet**  
**Paul Suchanek, Juneau**

*This article is based on an interview with one of the many experienced birders in Juneau Audubon Society. If you'd like to be interviewed about one of your favorite birds, please contact Marge Hermans at [marjorie.hermans@acsalaska.net](mailto:marjorie.hermans@acsalaska.net)*

**A** Ruby-crowned Kinglet was one of the first birds I saw that got me interested in birds in general.

I was in junior high or high school and was walking through the woods on the farm where we lived in southern Minnesota. I knew what Ruby-crowned Kinglets were, and I saw them in the bushes right next to me. Normally you can't see the red crown, but this bird was flashing its crown of red feathers. It was really close—only a few feet away—and I could see it without binoculars. It was really spectacular.

Also, one of the first bird songs I learned was the Ruby-crowned Kinglet's, and that got me going with birding by ear. It's a really strong song for such a small bird, and we hear it a lot around Juneau in the spring. It usually starts with a few chattering notes, then shifts to something like "Pretty-pretty-pretty-pretty me!" It's very ringing, easily heard, and we assume the birds are singing to establish their territories.



Bob Armstrong

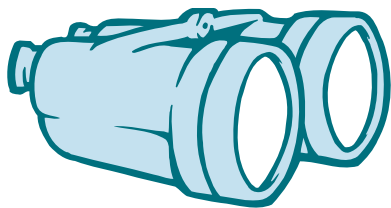
Except for hummingbirds, kinglets are about the smallest birds in this area. They're only about 4 inches long from the tip of the bill to the tip of the tail—smaller than most warblers. Kinglets flick their wings a lot (a good tip-off for identification), and they hover as they look for small insects, or insect eggs on the undersides of leaf surfaces. They're pretty much little grayish, olive-green birds, but they have white wing bars, so they look pretty different from any warblers you'd see around Juneau. Also below the bottom wing bar they have a big band of black on the wing. That's a good field mark to distinguish a kinglet from a warbler.

*Golden-crowned Kinglets* are generally found in spruce trees, often really high up, and they tend to move in flocks. Their bellies look pretty white, and the birds have a broad white stripe over the eye. *Ruby-crowned Kinglets* are typically found in deciduous brush and trees, and they often forage fairly low to the ground. They are a little more light olive green color, and they have no white stripe but a white eye ring.

Ruby-crowned Kinglets breed in Southeast's spruce forests, and one interesting thing is that their average clutch size is the highest of any songbird. They often have 7 eggs, and sometimes up to 12. They're pretty secretive. I've never personally seen a nest, and was just reading in an article that their nests can be up to 90 feet high in a spruce or hemlock.

Ruby-crowned Kinglets are one of the first passerine migrants to show up in Juneau. We usually see them in late March. When the migrants move out in fall, you'll see Ruby-crowned Kinglets moving south even into November. Occasionally one is seen on the Christmas Bird Count, but that's pretty rare.

You can also enjoy kinglets because they're such a common bird. You'll see them almost anywhere you go in the U.S. You realize a lot of these birds nest pretty much in the north, then you see them in the southern U.S. in the winter. Seeing a familiar bird like that links the two areas together.



# Spring Migration Bird Trips

**W**alks last about two hours. Bring binoculars and/or spotting scope, bird guide, rubber boots, and dress for weather. Please watch local media or our web site at <http://www.juneau-audubon-society.org> for possible schedule changes.

**Saturday** Berners Bay cruises  
**May 3** Depart Auke Bay Boat Harbor  
**8:30 & 1:30** Members will be on board as interpreters.

**Sunday** Mendenhall Wetlands State Game Refuge  
**May 4** Meet at parking lot at end of Radcliffe Rd  
**8 a.m.** Leader: Deborah Rudis

**Saturday** **International Migratory Bird Day**  
**May 10** Mendenhall Wetlands State Game Refuge  
**8 a.m.** Meet at parking lot at end of Radcliffe Rd  
Leader: Bob Armstrong

**Saturday** Mendenhall Wetlands State Game Refuge  
**May 17** Meet at parking lot at end of Radcliffe Rd.  
**8 a.m.** Leader: Bev Agler

## Bird Walk Field Notes

Paul Suchanek



**A**bout 15 birders met out at Eagle Beach on the morning of Saturday, April 12 to work on their gull identification skills. Although the tide stage was higher than expected, it was a beautiful calm morning with brilliant sun. While waiting to determine tide stage and locations of the major gull roosts, everyone got to examine the “view” from each of the wide variety of spotting scopes available. Gus van Vliet also entertained and informed all with a discussion of gull identification fundamentals. Eventually a few participants lacking boots had to retreat due to the tide stage, but most of the group moved closer to a roost of several hundred gulls. Nice comparisons of adult herring and Thayer’s gulls were made and also the class was able to study several age classes of mew gulls. A few Bonaparte’s gulls and glaucous-winged gulls were also present for comparison. In total, several hours were spent examining the gull flock present which constantly changed as gulls moved in or departed. Although no real rarities were spotted, it turned out to be an excellent day for birding as well as for enjoying the beautiful day.

**Saturday** Mendenhall Wetlands State Game Refuge  
**May 24** Meet at parking lot at end of Radcliffe Rd.  
**8 a.m.** Leader: Steve Zimmerman

**Saturday** Sandy Beach, Douglas  
**May 31** Meet at parking lot by picnic shelter  
**8 a.m.** Leader: Paul Suchanek

**Saturday** Dredge Lakes  
**June 7** Meet at parking lot by Mendenhall River  
**7:30 a.m.** bridge on Back Loop Road.  
Leader: Deanna MacPhail



## Berners Bay Field Notes - April 19

Deanna MacPhail

**T**he trip was an all-around success: calm seas, a sell-out crowd and extraordinary activity in Berners Bay. The eulachon were in the bay and just beginning to move up the rivers. Several pods of Steller Sea lions (Paul Suchanek estimated 200 animals) cooperatively fed in the bay, porpoised clear out of the water, and shadowed the two humpback whales that were also in the bay just a few yards from the boat. We cut the engine and watched the goings on for some minutes. I think everyone felt it was quite a show. Jamie Womble delivered much interesting information regarding the fish & mammals. While we were stopped a representative from Southeast Alaska Conservation Council (SEACC) gave a brief, non-inciteful summary of the Kensington Mine plans and possible access road activity. He said that if anyone had questions, they should contact him or check their web site, <http://www.seacc.org/>.

We saw and think we identified 24 species of birds; not great but not too shabby. Nothing unexpected in the types of birds; I think the favorite may have been the two Black Oyster-catchers on Sentinel Island.

# U.S. Army Corps of Engineers Permits

Juneau Chapter of the Audubon Society publishes these permit notices as a service to its members and encourages participation in the public review process. For more information on individual permits or comments call 1-800-478-2712 (Anchorage permits office). For possible permit violations in Southeast Alaska, call the Juneau office at 790-4490. Send your comments to: Regulatory Branch (1145b), P.O. Box 898, Anchorage, AK 99506-0898. **Note:** *The COE permits can now be found on line at <http://www.poa.usace.army.mil/reg/>*

**Even if the comment date has passed**, you can still send your comments to the Division of Governmental Coordination. The State review period on 404 permits usually ends after the COE comment period closes (as a general rule you can add four days to the comment period). It is important that your concerns reference the Coastal Zone Management program (Section 307 (c)(3) of the Coastal Zone Management Act of 1972) and the State Coastal management program (Alaska Statute Title 46). You may also comment on the State's Water Quality Certification (Section 401 of the Clean Water Act). Consistency guidelines for the Alaska Coastal Management Program (ACMP) on natural resources and habitats can be found in 6 AAC 80.040 to 6 AAC 80.120 and Water Quality standards can be found in 18 AAC 70. Please contact the Division of Governmental Coordination or the Department of Environmental Conservation for more information about applicable laws and project comment deadlines.

**Division of Governmental Coordination**  
**P.O. Box 110030**  
**Juneau, AK 99811-0300**  
**(907) 465-3562**

**Department of Environmental Conservation**  
**410 Willoughby Ave.**  
**Juneau, AK 99801-1795**  
**(907) 465-5260**

For additional information on regulations and guidelines for fill and dredge activity in marine waters and wetlands see the following: Section 10 of Rivers and Harbors Act 1899 (33 U.S.C. 403) - Placement of structures in waters of the United States; Section 404 and 404 (b) of the Clean Water Act (40 CFR 230) - Discharge of fill or dredged material into the waters of the United States; Section 103 Marine Protection, Research, and Sanctuaries Act of 1972 (33 U.S.C. 1413) - Transport of dredge material for the purpose of dumping in marine waters. If you need help on commenting or technical assistance, you can call Chris Kent at 463-3494.

**Point Lions — Point Lions River 1**, (Reference Number 4-2003-0145) **Applicant:** Native Village of Port Lions. **Location:** Port Lions on Kodiak Island, Alaska. **Proposal:** The applicant proposes to discharge 6,300 cubic feet of fill into 1.03 acres of wetlands. **Purpose:** To create a building pad for a 13,250 foot Cultural Center and parking lot. **Mitigation:** None. Comments due: *April 18, 2003*.

**Haines — Chilkat River 18**, (Reference Number 4-1996-0320) **Applicant:** Stanley Jones. **Location:** Haines. **Proposal:** The applicant proposes the placement of approximately 23,085 cubic yards of clean fill material within an approximate 7.34 acre emergent wetland area to create:

- Access Road: 750' x 30' (22,500 sq. ft.)
- Parking Area: 125' x 250' (30,000 sq. ft.)
- Maintenance Pad: 80' x 100' (8,000 sq. ft.)
- Club House Pad: 70' x 70' (4,900 sq. ft.)
- Construction Road including 15 bridge abutments: 7,000' x 15' (105,000 sq. ft.)
- Driving Range Access Road: 450' x 8' (3,600 sq. ft.)
- Driving Range Pad: 135' x 20' (2,700 sq. ft.)
- Equipment Pad at Driving Range: 30' x 40' (1,200 sq. ft.)
- Greens: (see detail drawings): (133,480 sq. ft.)
- Tees: twenty seven @ 20' x 20' (10,800 sq. ft.)

**TOTAL WETLAND FILL AREA:** 319,815 square feet (7.34 acres)

**Purpose:** To construct a 9-hole golf course. Additional information: On April 5, 2002, the Alaska District Corps of Engineers published a Public Notice, CEPOA-CO Number 4-1996-0320, Chilkat River 18, for the placement of fill within an approximate 5.5 acre emergent wetland area for the construction of this project. The application was withdrawn by the applicant pending a final design. The current proposal has been modified to include mechanized land clearing within an additional approximate 3.97 acres of emergent wetland area for on-site borrow material extraction. **Mitigation:** As a result of pre-application coordination, and based on the fact that a portion of the proposed project would occur below the High Tide Line, the applicant has incorporated the following management practices to reduce impacts to the aquatic environment: The proposed borrow areas will be a minimum of 5' from the anadromous tributaries of the Chilkat River in order to retain the naturally vegetated buffers to the streams. **In addition** a narrow 2-3' wide channel will be excavated from within each buffer zone, to no lower than the ordinary water level of the stream at low tide, to prevent fish from being trapped within the excavated areas at low tidal elevations. Comments due: *April 7, 2003*

**Juneau — Montana Creek 24**, (Reference Number 0-2002-0326) **Applicant:** Ambre Willis. **Location:** 4944 Wren Drive, on Lot 1, Block F McGinnis 5B Subdivision. **Proposal:** The applicant proposes to discharge fill into .188 acres of Class A wetlands and pond to create an upland area to construct a

garage and office and to remove an open water area. The COE issued permit number 4-2002-0326 (Montana Creek 24) authorizing the placement of fill into .16 acres of Categorized Wetland "A" to construct a single-family residence. The permit was modified on October 23, 2002 with no fill footprint increase. **Mitigation:** None. Comments due by *May 1, 2003*.

**Juneau — Amalga Harbor 2**, (Reference Number 2-2001-0637) **Applicant:** City and Borough of Juneau. **Location:** Amalga Harbor. **Proposal:** The applicant proposes to dredge 12,000 cubic yards of material from a 2 acre area below mean high tide line within Amalga Harbor. The material will be barged to Lynn Canal and discharged. Another 15,248 cubic yards of clean fill will be discharged into 1.52 acres of scrub shrub and forested wetlands for the construction of a 210-foot wide by 210-foot long parking lot, a 70-foot wide by 190-foot long small boaters parking lot and a 25-foot wide by 200-foot long addition to the main parking lot. Additional fill will be placed in the intertidal zone for create a 16-foot wide by 185-foot long concrete beach access ramp. **Purpose:** To improve Amalga boat access and traffic flow. **Mitigation:** None. Comments due by *April 30, 2003*.

**Juneau — Gastineau Channel 350**, (Reference Number 2-2002-0671) **Applicant:** Salmon Creek Development Company. **Location:** 3139 Channel Drive (next to the freight yard). **Proposal:** The applicant proposes to discharge 1,050 cubic yards of fill material into 4,500-square feet (0.10 acre) of intertidal habitat for the creation of a oil and water separator. **Additional information:** Department of the Army Permit Number 2-1982-0204, Gastineau Channel 350, was issued to Salmon Creek Development Company on November 22, 1982, to dredge approximately 50,000-yds of marine sediment from 2.7 acres of Gastineau Channel and place that material in 2.1 acres of the intertidal zone to construct marine facilities. On December 4, 1984, the permit was modified to authorizing increased quantity of dredged material to 75,000-yds and expanded the dredged area to 4.98 acres. This modification included a permit special condition requiring a confined dredge spoil disposal area. On April 15, 1985, the permit was modified authorizing a revised confined dredge spoil disposal plan. The permit was modified on February 12, 1986, authorizing the construction of a concrete boat launching ramp, staging area, and a mooring float; removal of a barge and construction of two 40' X 60' docks and four timber pile dolphins. A permit modification was issued on June 16, 1986, authorizing the construction of a concrete boat launching ramp, staging area, and a mooring float; removal of a barge and a 16' X 64' steel transfer ramp with two support columns. On April 26, 1989, the permit was modified authorizing dredging of approximately 24,000-yds of material from Gastineau Channel. The permit was modified on November 7, 2001, authorizing driving 4 eighteen-inch steel vertical support piles and 4 twelve-inch batter piles to support a ramp-lifting A-Frame. The current proposal would include the installation of a 400-gallon capacity oil water separator and 15 linear feet of 18-inch diameter culvert that would carry stormwater runoff the existing ditch currently does. **Purpose:** To create a storm water

drainage system. **Mitigation:** None. Comments due by *April 28, 2003*.

**Juneau — Gastineau 488**, (Reference Number 4-1992-0223) **AFTER THE FACT Applicant:** Marciano Duran. **Location:** 1568 Glacier Highway. **Proposal:** After-the-fact permitting of mechanical land clearing within an approximate 138,831 square foot forested wetland area; the discharge of approximately 20,700 cubic yards of clean fill material for the construction of house pads, driveways and yard areas; and the discharge of approximately 400 cubic yards of clean fill material to relocate two approximate 150' long by 8' drainage channels. (Total wetland impact 3.2 acres). **Additional information:** The entire lot has been mechanically cleared. The applicant is proposing to fill all the wetlands on this parcel in order to provide the future lot owners with yard and storage areas and to landscape for drainage on the moderately steep slope. **Purpose:** The purpose of the project is the construction of a 26-lot subdivision. **Mitigation:** None. Comments due by *May 7, 2003*

**Sitka — Chatham Strait 80**, (Reference Number 0-1976-0098) **Applicant:** Alaska Department of Fish and Game.. **Location:** Northern Southeast Regional Aquaculture Association, 1308 Sawmill Creek Road. **Proposal:** To perform upgrades and construct new features to the existing facility. The proposed work consists of the following:

1. Raise the lagoon dike from 10 foot from mean low low water (MLLW) to 11 foot above MLLW by adding approximately one foot of concrete. The upstream face of the dike would be reinforced by adding a geotextile liner, covered with 12" of 2"-minus gravel and capped with 12" riprap rock. The liner and riprap would be keyed into the substrate for re-enforcement. The spillway and fish access point would be redesigned for easier regulation of pool height and pool maintenance. The finished toe-to-toe area of impact would be -0.09 acres filled with -170 cubic yards of rock.
2. Construct a 140-150 linear foot fishway that would be extend seaward of the lagoon dike. The fishway would be made up of 14 pools measuring 10 foot by 10 foot with an approximately 0.65 foot rise between them for a total lift of approximately nine feet. The rock for the fishway would be obtained from intertidal bobble, from blasting of intertidal bedrock and riprap from quarries in Angoon or other quarries. The rock pools would be stabilized with epoxy grout suitable for marine environments. Construction of the fishway would cover (or disturb) approximately 0.07 acres of intertidal substrate with approximately 75 cubic yards of rock (intertidal cobble and imported material).
3. Expand an existing aluminum pool and weir fishway ladder from four foot to eight foot in width replace an existing culvert under the service road near the top of the ladder with a concrete bridge.
4. Construct new "pole" type building to serve as coho and Chinook incubation and house start tank round ponder under cover. Remove two existing linear raceways and

- several “swede” ponds and replace with 20, 16-foot diameter by 4-foot deep round ponds for initial fry rearing.
5. Outside the chum incubation building and along the southeast side of the existing round pond field, replace the existing 4-foot wide by 60-foot long ponding raceways with the two large linear aluminum raceways from item #4 and plumb appropriate for complex.
  6. Install a new 16 inch diameter by 960 foot long water line and intertie to serve the chinook saltwater rearing complex. The pipeline would be buried within the existing fill footprint to a depth of 4 feet, day lighting to Kasnyku Bay just above the HTL and resting on the substrate until reaching the net pens where the pipeline would raise to the water surface.

**Purpose:** To increase the coho smolt production and provide better recruitment of adult chum salmon for the hatchery, and maintain/update the existing facility. **Mitigation:** The applicant proposes to de-water the lagoon before starting work on the dike and would work on the fishway only during low tide. All equipment would be operated from the dike or from intertidal bedrock. Comments due by *March 19, 2003*.

**Ketchikan — Clover Passage 55**, (Reference Number 1-2001-1283) **Applicant:** William Moran. **Location:** Off North Point Higgins Road near Ketchikan. **Proposal:** The applicant proposes to construct a 60-foot by 15-foot pile supported floating dock with a 5-foot by 70-foot aluminum access ramp and a 100-foot by 8-foot aluminum pier, and five 16-inch galvanized steel pilings. **Purpose:** To provide moorage for a recreational boat. **Additional Information:** On December 6, 2001 a Nationwide permit 7 was issued for installation of a 212-feet of a 4-inch sewer line. A Nationwide permit 13 was issued for construction of a 150-foot bank stabilization wall below high tide line. **Mitigation:** None. Comments due by *May 7, 2003*.

**Ketchikan — Tongass Narrows 556**, (Reference Number 1-2003-0271) **Applicant:** US Army, 7<sup>th</sup> engineer Detachment.. **Location:** South of Ketchikan Harbor Wreck Buoy #6. **Proposal:** The applicant proposes to re-float a 327-foot by 52-foot by 35-foot sunken World War II era Landing Ship Tank. The vessel would be towed to deeper water and re-sunk. **Purpose:** To provide army training while removing a navigational hazard. **Mitigation:** None. Comments due by *April 25, 2003*.

**Ketchikan — Nicholas Passage 13**, (Reference Number 4-1999-1036) **AFTER-THE-FACT Applicant:** Harlan Heaton. **Location:** 5 miles south of Ketchikan. **Proposal:** Discharge 95 cubic yards of rock into 0.52 acres of wetlands and streams as follows:

- After The Fact discharge of 62 cubic yards of rock into 0.06 acres of small drainages and one small stream.
- Discharge 22 cubic yards of rock into 0.03 acre of drainage and stream
- Discharge 11 cubic yards of rock into 0.43 acre of remnant and created wetlands

- Excavate 0.6 cubic yards of rock from 44 square feet of a small drainage to replace an 18-inch by 26-foot long culvert. **Purpose:** To develop a site for a private residence and commercial development

**Additional Information:** This is an approximately 32.4 acre site containing 2 small drainages, 1 small stream and approximately 13 acres of wetlands. The applicant purchased the site in February 1990. He subsequently logged and cleared approximately 20 acres. In addition he has quarried portions of the site and cut and filled approximately 4.75 acres for road access and a residence. In September 1999 it was determined that Mr. Heaton had impacted jurisdictional wetlands and streams in the process of his work without prior authorization. A Notice of violation was issued. In November 2001, due in part to the age of the work and a lack comment from the state and Federal resource agencies during our investigation, the Corps determined that impacts to waters of the United States had been minimal and the violation was closed as minor with no further enforcement action required. Mr. Heaton was advised that no further discharge of fill into waters of the United States could occur without prior authorization. In October 2002, Mr. Heaton contacted the Corps concerning additional work and was advised to obtain a jurisdictional determination for the property, which he provided in January 2003. The Corps determined that the upper undisturbed portion of the property is forested wetlands. The jurisdictional determination showed that small bands of created wetlands, caused by Mr. Heaton’s work and drainage patterns on the property, have become naturalized wetlands. Mr. Heaton now wishes to fill the created wetlands and additional portions of the drainages and stream. The 22 cy of drainage and stream fill referenced above represent the amount placed below ordinary high water mark. The applicant’s consultant, Mr. Tim Droke, Drosos Consulting, measured flows above and below the filled portions of the drainages and stream during a 2 -day rain event on January 26, 2003, and reported that the “French drain” system created by the boulders in the channels passed the water with no discernible flow difference in the channel above and below the fill. This Public Notice covers existing impacts and proposed impacts to the drainages, stream, and created wetlands. No work is proposed in the remaining approximately 13 acres of undisturbed wetlands. **Mitigation:** None. Comments due by *April 10, 2003*.

**Craig — Port Bagial 02**, (Reference Number 4-2002-1084) **Applicant:** City of Craig. **Location:** 5 miles southeast of Craig. **Proposal:** The applicant proposes to discharge 2,400 cubic yards of rock and 390 cubic yards of D-1 to create a pad for the expansion of the existing water treatment plant and for a future fish rearing facility. An additional 100 cubic yards of rock will be used in the construction of an 8-foot by 24-inch by 160-foot drainage ditch. **Purpose:** Expansion of the existing water treatment plant for another treatment train and storage and the future use by the Prince of Wales Hatchery Association. **Mitigation:** None. Comments due by *April 30, 2003*.

Every membership supports Audubon's vital efforts to protect birds, wildlife and natural habitats. As a member, you will become an important part of our chapter and receive a host of benefits including:

- A one-year subscription (9 issues) of our chapter newsletter, *The Raven*
- Automatic membership in National Audubon Society and a one-year subscription to the award-winning Audubon magazine.

## Audubon Society Membership Application

\_\_\_\_\_ \$20 (1-year introductory rate) \_\_\_\_\_ \$15 (1-year student/senior rate)

Name \_\_\_\_\_

Address \_\_\_\_\_

City/State/Zipcode \_\_\_\_\_

Telephone number \_\_\_\_\_

\_\_\_\_ My check for \$ \_\_\_\_\_ is enclosed \_\_\_\_\_ Please bill me

**Mail to: National Audubon Society, Membership Data Center, P.O. Box  
52529, Boulder, CO 80322-2529**

**A51  
7XCH**

*If you prefer to just support Juneau Audubon Society, fill out the form above and send with \$10 to: Juneau Audubon Society, P.O. Box 021725, Juneau, AK 99802, Attn.: membership. NOTE: if you wish to join National Audubon Society, please send your check with the membership application to Boulder, CO.*

### Officers, Committee Chairs, Events Coordinators

<b>President:</b>	Brenda Wright, 789-4656, <a href="mailto:president@juneau-audubon-society.org">president@juneau-audubon-society.org</a>
<b>Vice-President:</b>	Chris Kent, 463-3494, <a href="mailto:ckent@alaska.net">ckent@alaska.net</a>
<b>Secretary:</b>	Deanna MacPhail, 789-0651, <a href="mailto:bandmac@gci.net">bandmac@gci.net</a>
<b>Treasurer:</b>	Liz Blecker, 586-4210, <a href="mailto:lblecker@gci.net">lblecker@gci.net</a>
<b>Programs:</b>	Matt Kirchhoff, 586-5816, <a href="mailto:kirchhoff@gci.net">kirchhoff@gci.net</a>
<b>Membership:</b>	Amy Skilbred, 780-4649, <a href="mailto:skilbred@aol.com">skilbred@aol.com</a>
<b>Education:</b>	Mary Lou King, 789-7540, <a href="mailto:kingfarm@ptialaska.net">kingfarm@ptialaska.net</a>
<b>Publicity:</b>	Deborah Rudis, 789-4260, <a href="mailto:akwildlife@gci.net">akwildlife@gci.net</a>
<b>Conservation:</b>	Matt Kirchhoff, 586-5816, <a href="mailto:kirchhoff@gci.net">kirchhoff@gci.net</a>
<b>Field Trips:</b>	Steve Zimmerman, 586-2597, <a href="mailto:stevezimmerman@gci.net">stevezimmerman@gci.net</a>
<b>Raven Editor:</b>	Judy Shuler, 789-9544, <a href="mailto:raven@juneau-audubon-society.org">raven@juneau-audubon-society.org</a>
<b>Public Market Coordinator:</b>	Kathleen Weltzin, 789-0288, <a href="mailto:kweltzin@alaska.net">kweltzin@alaska.net</a>

**JUNEAU AUDUBON SOCIETY  
P.O. BOX 021725  
JUNEAU, AK 99802**

Nonprofit Org.  
U.S. Postage Paid  
Permit No. 153  
Juneau, AK 99802

