

THE RAVEN



Vol 28 No 2

JUNEAU AUDUBON SOCIETY

October 2001

Juneau Audubon October Meeting

Thursday, October 11, 7:30 p.m., Dzantik'I Heeni Middle School Library (2nd Floor)

JUNEAU RAPTOR CENTER ACTIVITIES AND PLANS **Report and Program by Sandy Harbanuk**

What a difference a year makes! 2001 has been both exciting and exhausting for the Juneau Raptor Center. In the first nine months of the year, we have already treated more birds than we did in all of 2000. More than 40 eagles, plus 4 Great horned owls, have come through the Center, as well a very large number of immature songbirds throughout the summer.

With the promise of land for our new clinic/rehab center and science museum dangling tantalizingly close, we have been immersed in planning. On Thursday, October 11, we'll present our plan for the new Center to Audubon, and hope Audubon members will share your ideas for this community facility.

CALENDAR OF EVENTS

University of Alaska Southeast Juneau Campus

EVENING AT EGAN--A fall lectures series is underway Friday evenings at the University of Alaska Southeast. The free, public presentations begin at 7 p.m. each Friday, except Thanksgiving weekend, through November 30. The schedule follows:

Friday, October 5--"Radicals in Petticoats: Women Journalists of Victorian England."

Dr. Alexis Easley, UAS Assistant Professor of English

Friday, October 12--"Deep Discoveries in Southeast Alaska Caves" Dr. Dan Monteith,

UAS Assistant Professor of Anthropology Barbara Morgan, UAS Biology student

Friday, October 19--"Harbor Seal Population Declines in Glacier Bay National Park."

Beth Mathews, UAS Assistant Professor of Biology

Friday, October 26--"Other Solar Systems Other Stars." Don Greenberg, UAS Professor of Mathematics and Physics

Friday, November 2--N. Scott Momaday 1969 Pulitzer prize for Fiction Author, poet, scholar

Friday, November 9—"Brown Bears - Growing up at Pack Creek." Dr. Robert Fagen, UAF, Associate Professor of Biometrics
Johanna Fagen, UAS Adjunct Faculty in Biology
Friday, November 16—"The Evolution of Tlingit and Haida Art." Steve Henrikson, Alaska State Museum Curator of Collections
Friday, Nov. 23--Thanksgiving. No program
Friday, Nov. 30—"This Note's for You: English Poetry and the Quest for Authenticity." Jim Hale, UAS Assistant Professor of English

COLD CLIMATE COASTAL CONSTRUCTION--New UAS construction technology faculty member Marquam George is teaching a class that teaches the details and techniques that create a durable structure in a miserable climate. George, who is a long-time Juneau contractor with particular interest in healthy and durable homes, says, "Learn from my mistakes and not yours."

The class begins October 11 and meets on several Thursday evenings and three Saturdays. For information call George at 465-8774. George also is willing to organize construction classes that meet the needs and interests of local residents. Call him at the same number with requests.

ELECTION OF JUNEAU AUDUBON SOCIETY OFFICERS

An election of officers will be held during the regular October 11 meeting. The following people have agreed to run:

Steve Zimmerman, President

Deanna McPhail, Secretary

George Utermohle, Treasure

Members are welcome to submit other names for these positions.

JUNEAU AUDUBON BOARD COLUMN By Deanna MacPhail

Get engaged. Guaranteed results by Valentine's Day!

Now that I have your attention, let me elaborate. It is well known that personal involvement increases one's enjoyment of a particular happening or event. Consider this an invitation to become more involved in your Audubon chapter. We're a small group and we depend upon your ideas and efforts to keep the group vital. We're currently seeking folks interested in contributing their time and talents, especially with regard to Programs and Field Trips. Traditionally, we have a chairperson for each and would welcome those interested in taking on the duties. In addition, ideas, suggestions and volunteers would be rewarded with appreciation and gratitude. You needn't make a life-long commitment, or even an annual promise. But perhaps you might offer to lead a hike, work at the Audubon booth during the Public Market, or make a presentation at one of the monthly meetings.

During the past year we enjoyed a remarkable variety of presentations at our meetings. And if you stop to think about it, they were generally given by members of the community who had been out doing something which interested them, and by no small coincidence, interested us as well. We all like to see pictures and hear someone talk about our natural world. The subject matter need not be exotic or distant, and you certainly aren't required to be an expert in the field. A closer look at some of our local specialties is just as riveting as an escape to the tropics.

Now that most of us are home from our summer wanderings, and not yet launched on our winter trips, why not give some thought to how you might share your time, energy and/or experiences with the group. And for that next trip, tuck in a couple of extra rolls of film or another memory storage device for your digital camera; take some dynamite pictures and bring them back to share with us.

SANITARY LANDFILL AS A NATIONAL HISTORIC LANDMARK

The news release entitled "**Secretary Norton Designates 15 Sites in 11 States as National Historic Landmarks**" was prepared by the Dept. of Interior and released to national newspapers on August 27th. Rupe Andrew's comments and quotes from the release follow:

Our Secretary of the Interior, "the evil Baroness of Heap-Leach," on August 27th designated the Fresno, (Calif.) Sanitary Landfill as a national historic landmark. This is the kind of place we have previously heard that Norton so much admires. Here is the Monday, August 27th, news release of this national treasure:

"The Fresno Sanitary Landfill was opened in 1937 and closed in 1987. "It is the oldest 'true' sanitary landfill in the United States and the oldest to employ compartmentalized municipal landfill in the western United States, holding a service record of more than 50 years of continuous operation. It is the first landfill to employ the trench method of disposal and the first to utilize compaction. At the Fresno site, the layering of refuse and dirt in trenches, compacting the dirt and refuse, and then covering the filled areas daily to minimize rodent and debris problems represented the technique adopted by the builders of modern society landfills, and thus represented a true sanitary landfill, not simply a modification on older land-dumping methods.

These special sites (the Fresno dump was one of 15 new national landmarks) underscore our heritage and tell stories of periods of events in our history, Norton said. By preserving these unique sites, we share our culture and rich diversity with our children for future generations to learn from and enjoy."

Well, the evil Baroness discovered that this particular national treasure—79 million tons of rotting garbage, leeching paints, solvents, and other hazardous chemicals into the groundwater— also is an EPA superfund site. So far it has cost the taxpayers \$38 million dollars in cleanup costs, and the work has hardly begun.

Maybe Interior will build a Fresno Sanitary Landfill visitor center and assign some rangers for interpretative talks around the campfire. The campfire in this case is the continuous methane fire that burns the dump.

CORPS OF ENGINEERS PERMIT—JUNEAU—Stevens Passage 21

Four Seasons Marine and Tour, Inc., proposes to construct on Colt Island a 100 foot long by 12 foot wide dock connected to a 200 foot long by 8 foot wide gangway connected to shore by a concrete or timber abutment with 6 piles, 3 anchors. They also propose a marine wastewater outfall extending to approx. -4 feet. **Purpose:** to provide moorage for marine vessels and wastewater treatment facility to a tourist industry operation.

AQUATIC FARM FOR THE CULTURE OF GEODUCK CLAMS AND LITTLENECK CLAMS PROPOSED IN BRIDGET COVE By Mary Lou King

The Narrative Application begins: "This site offers good habitat and easy, year around access via the road system to Juneau. The North Bridget Cove site is located just off the Juneau road system about 38 miles North of Juneau. The location is ideal for access and yet distant enough from the population center to avoid use conflict."

This access just happens to be on one of Juneau's Natural Area Parks. The Park is in an extremely beautiful area and heavily used for picnicking, clam digging, seaweed gathering (one of the few places not polluted by human activity on the road system), minus tide walks, hiking, and camping by church and other groups, and numerous individuals. One of the hiking trails to Point Bridget State Park is located in this park. It is a rare day to see an empty parking lot at the trailhead.

When the Forest Service's Eagle River Picnic site is transferred to State Parks, with the accompanying fee for use, then North Bridget Park will become even more popular and heavily used. This area might then be extremely important for providing some essential park amenities that increased use would necessitate.

The Narrative Application further states: "An upland caretaker facility is not required for this site as it is accessible by road. However, a caretaker facility would be preferable... The farm site will cover about 4000 sq. ft. of intertidal area with a mix of Geoduck and Little Neck clams. The Geoduck will be seeded in plastic tubes, open at the bottom and covered at the top with plastic mesh ...The Little Neck clams will be seeded under a plastic mesh tarp...between the tubes. ...Geoduck can be harvested (after 4 years) either by water wands or suction tubes at either low or minus tides and the Little Necks will be harvested with hand rakes."

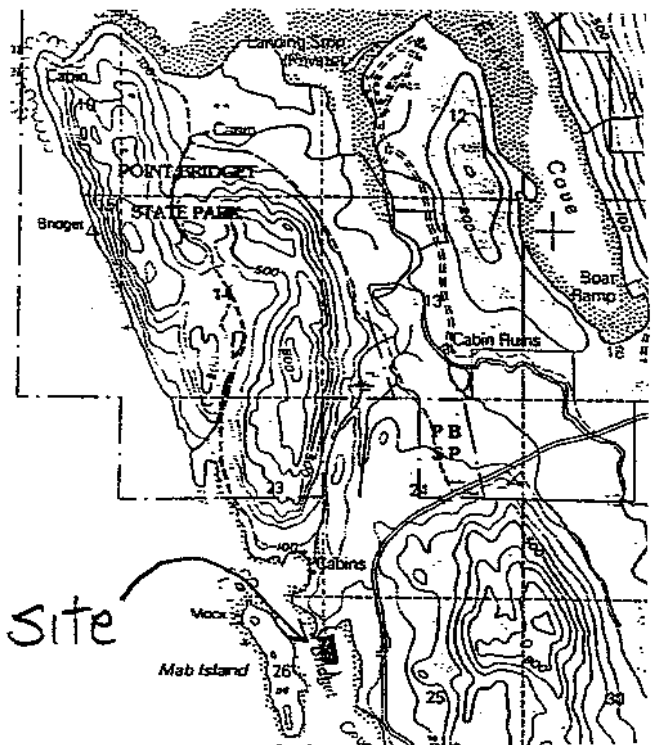
Is this really what we want to do with our parks and public tideflats? Both the State and the CBJ Assembly must give approval before permits could be issued.

For more information or to submit comments
Contact: Div. Of Governmental Coordination
PO Box 110030
Juneau, AK 99811-0030

Jennifer Garland 465-3177
Jennifer_Garland@gov.state.ak.us

Contact: CBJ Assembly Members
155 S. Seward Street
Juneau, AK 99801

Mayor Sally Smith 586-5240 (W)
Sally_Smith@ci.juneau.ak.us



EXCERPTS FROM EAGLECHAT

From: "Bev Agler" --I was out on the wetlands dike trail at noon today, Monday 1 Oct and there were lots and lots ~50+ sparrows in one little stretch (the beginning of the forest). All species, though mostly golden-crowned. Twelve golden-crowned in one binocular view. Certainly enough to make me practice sparrows, which are my nemesis!

Also a peregrine falcon, 2 pectoral sandpipers, and a northern harrier. So migration is still on, contrary to how I felt on Saturday when I walked into the flats and only saw a few pectoral sandpipers and 30 western sandpipers (peeps).

From: spruceak@yahoo.com
Subject: Sparrows, thrushes at Gustavus too

There's been a large concentration of golden-crowned sparrows at Gustavus too since Sat., 9/29, and also large numbers of robins, and varied and hermit thrushes during the same time. Presumably these are northern birds flushed out by cooling weather that have "fallen out" in Southeast for a short time until more favorable migration conditions arrive. The warblers have gone, though!

From: Laurie Ferguson Craig <lauriecraig@gci.net>
Subject: Dike trail closure possible

A rumor is circulating that FAA and the airport may announce soon that the airport dike trail will be closed for security purposes. We need to be prepared with arguments about why that move would be unnecessary. Remember, the trail is on airport property. Here are some thoughts:

1. The hundreds of people who walk the trail are the best security available. We are citizen monitors who are familiar with who uses the trail and where they go. Neither the FAA nor the airport has staff to patrol the trail or airport perimeter but we do it regularly each day. (Will they use the national guard to protect the perimeter?) It is an overreaction to prevent use of the trail and keep the public out.
2. The hunters are our allies. We do not want hunting discontinued from the wetlands. At the most, certain areas might be restricted from shooting -- like directly beneath the flight path -- but hunting (and hiking) are essential traditional uses and there is little threat from either group.
3. **FENCE** the runway and floatpond immediately. Electrify the fence if needed to detect breaches. The entire east side of the runway and floatpond are completely open to access without a trail, plus the wetlands are open from a boat or other approach from the channel or Douglas so keeping us of the trail leaves the airport more vulnerable.

JUNEAU AUDUBON MEMBERSHIP APPLICATION

Join Us Today!

Every membership supports Audubon's vital efforts to protect birds, wildlife and natural habitats. As a member, you will become an important part of our dynamic chapter and receive a host of benefits including:

- ❖ A 1-year subscription (9 issues) of our chapter newsletter, *The Raven*;
- ❖ Automatic membership in National Audubon Society, and a 1-year subscription of *Audubon* magazine;

Yes! I want to join Juneau Audubon and National Audubon Society!

\$20 - 1 year Introductory Rate \$15 - 1 year Student/Senior Rate \$30 - 2 year Special Rate
 My check is enclosed. Please bill me.

Name: _____

Address: _____

City/St/Zip _____

Tel: _____

Mail to: National Audubon Society, Membership Data Center, P.O. Box 52529, Boulder, CO 80322-2529 **A51
7XCH**

If you prefer to just support Juneau Audubon Society, fill out the form above writing in Juneau Audubon only and send \$10 to: The Raven Editor, PO Box 021725, Juneau, AK 99802

JUNEAU AUDUBON SOCIETY OFFICERS, CHAIRS AND COORDINATORS

President: Steve Zimmerman 586-2597

Vice President: Brenda Wright 789-4656

Secretary: Deanna MacPhail 789-0651

Treasurer: George Utermohle 586-3849

Programs: Open

Membership: Prill Mollick

Education: Amy Skilbred 780-4649

Publicity: Debbie Rudis 789-4260

Conservation: Chris Kent 463-3494

Field Trips: Open

Raven Editor: Mary Lou King 789-7540

Springfest Coordinators: Judy Shuler 789-9544,

Kathy Weltzin 789-0288

JUNEAU AUDUBON WEB PAGE

Be sure to check out our home page on the Internet. It's hosted by the folks that have developed JUNEAU.COM. Our site's URL (Universal Resource Locator) is <http://www.juneau.com/audubon/audubon1.htm> -- add it to your favorites!. Recent editions of the Juneau Audubon Newsletter are posted along with links to the Anchorage and National Audubon sites. If you're interested in Corps of Engineers permits, they are posted with this month's newsletter. We are always looking for pictures, stories or ideas to post on our web site. To contribute, email Chris Kent at ckent@alaska.net

JUNEAU AUDUBON SOCIETY
PO BOX 021725
JUNEAU, AK 99802

Address Service Requested

Nonprofit Org.
U.S. Postage
Paid
Permit No. 153
Juneau, AK 99802

